

<b>FR</b>	Dossier Technique Électrique	4
<b>EN</b>	Electrical Technical File	13
<b>DE</b>	Elektrische technische Daten	19

 **AccessLane**<sup>™</sup>



# ACCESSLANE

Rev. 03 • Update 08/2022





# ACCESSLANE

**ATTENTION!**

SONT REPRIS DANS LE PRÉSENT DOSSIER TECHNIQUE ÉLECTRIQUE :

- TOUS LES SCHÉMAS ÉLECTRIQUES DES PRODUITS STANDARDS ;
- LES SCHÉMAS ÉLECTRIQUES POUR L'OPTION BOUTON D'OUVERTURE D'URGENCE
- LES SCHÉMAS ÉLECTRIQUES POUR L'OPTION 'DAS' (FRANCE)

**ATTENTION!**

POUR TOUT AUTRE TYPE D'OPTION OU DE CUSTOMISATION, SE RÉFÉRER AU DOSSIER TECHNIQUE ÉLECTRIQUE SPÉCIFIQUE FOURNI AVEC VOTRE ÉQUIPEMENT!

**ATTENTION!**

THE FOLLOWING ARE INCLUDED IN THIS ELECTRICAL TECHNICAL FILE :

- ALL ELECTRICAL DIAGRAMS OF STANDARD PRODUCTS ;
- ELECTRICAL DIAGRAMS FOR THE EMERGENCY OPENING BUTTON OPTION

**ATTENTION!**

FOR ANY OTHER TYPE OF OPTION OR CUSTOMISATION PLEASE REFER TO THE SPECIFIC ELECTRICAL TECHNICAL FILE SUPPLIED WITH YOUR EQUIPMENT!

**ACHTUNG!**

IN DIESER ELEKTROTECHNISCHE DATEI IST FOLGENDES ENTHALTEN:

- ALLE ELEKTRISCHEN SCHALTPLÄNE DER STANDARDPRODUKTE

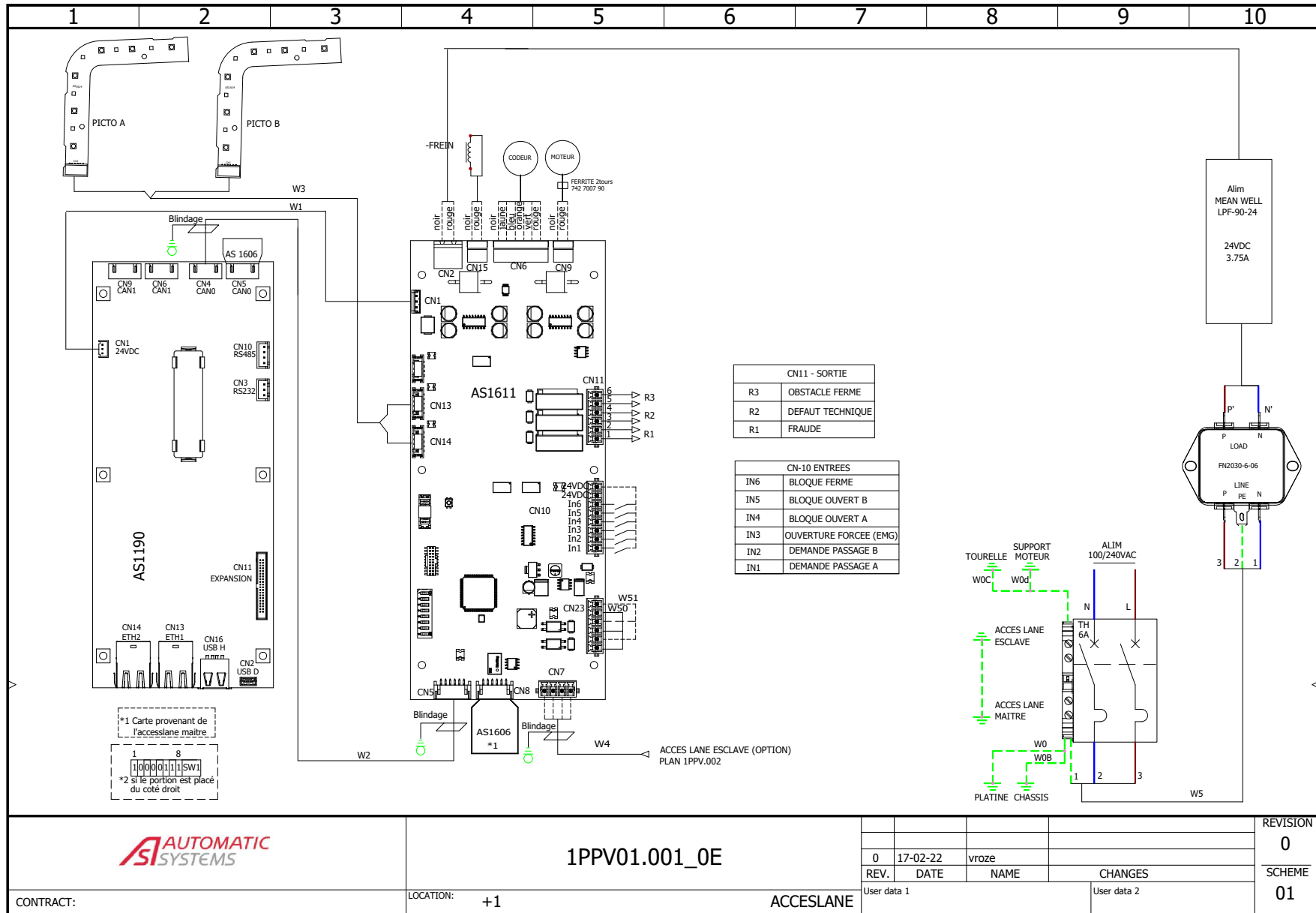
**ACHTUNG!**

FÜR JEDE ANDERE ART VON OPTION ODER KUNDENSPEZIFISCHER ANPASSUNG LESEN SIE BITTE DIE SPEZIFISCHE ELEKTROTECHNISCHE DATEI, DIE MIT IHREM GERÄT GELIEFERT WURDE!

# ACCESSLANE - PORTILLONS PIVOTANTS VITRÉS

FRANÇAIS

ENGLISH



SOLIDWORKS Electrical



1PPV01.001\_0E

CONTRACT:

LOCATION: +1

ACCESSLANE

User data 1

User data 2

REVISION

0

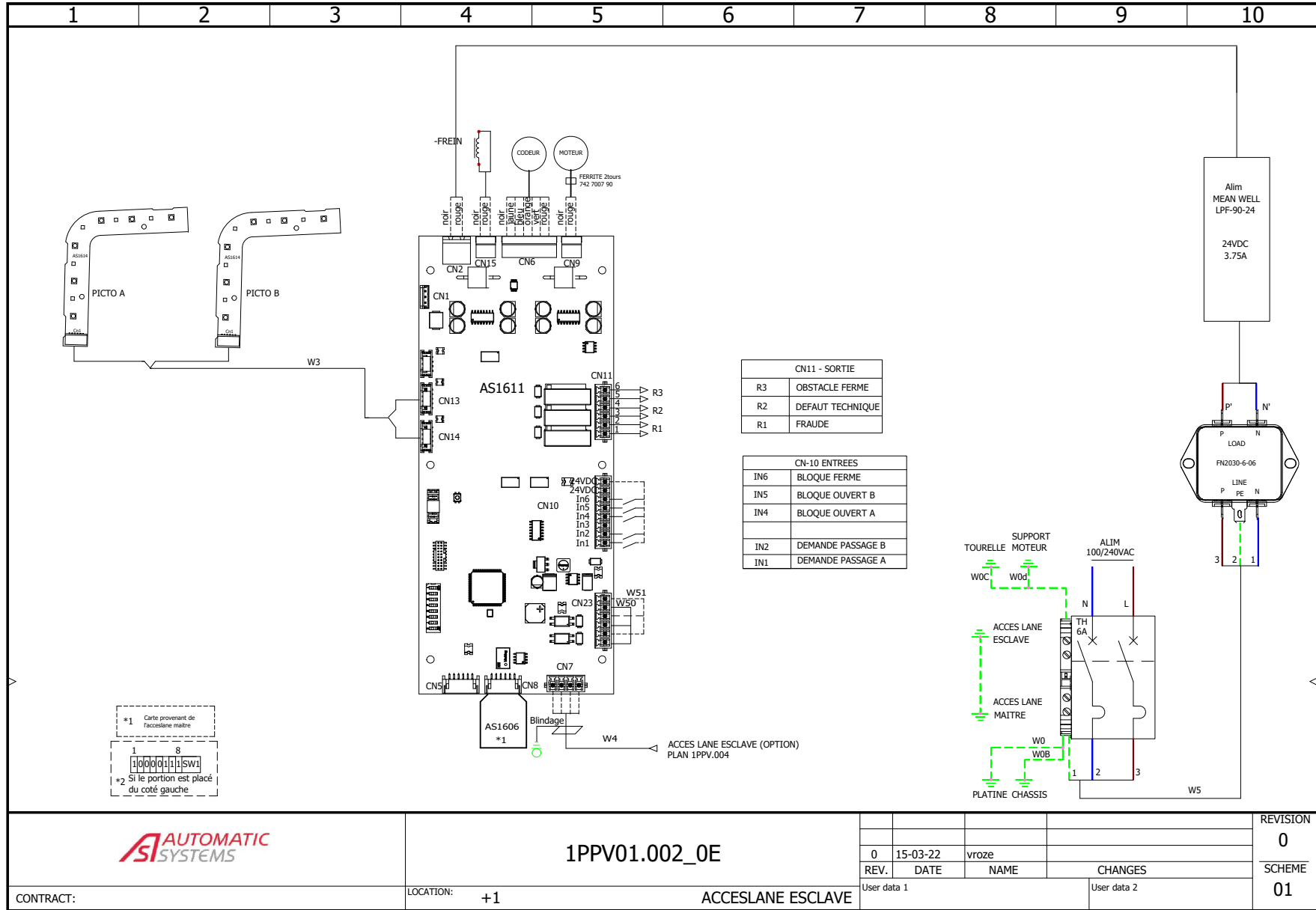
SCHEME

01

# ACCESSLANE - PORTILLONS PIVOTANTS VITRÉS

FRANÇAIS

ENGLISH



SOLIDWORKS Electrical



1PPV01.002\_0E

CONTRACT:

LOCATION:

+1

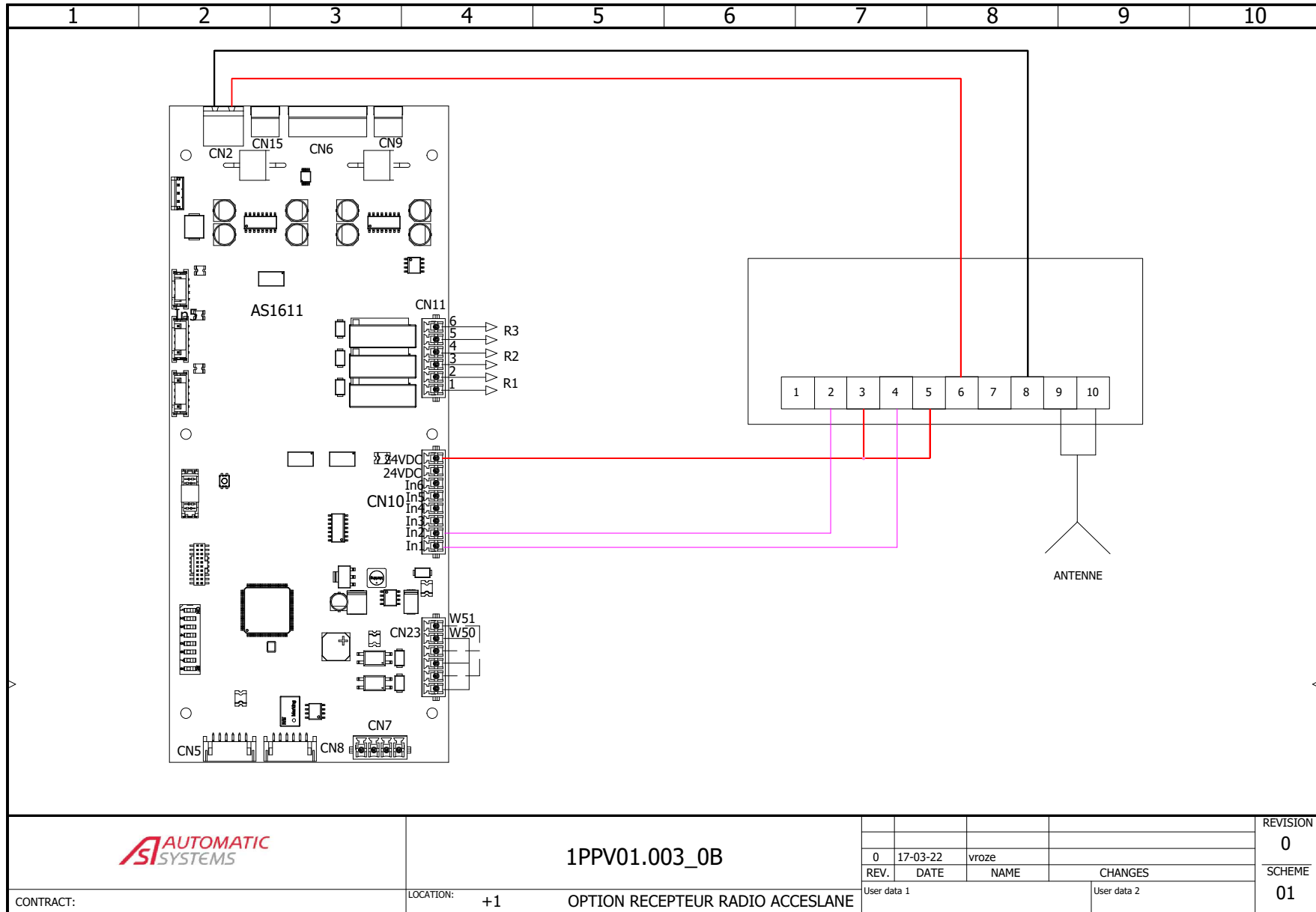
ACCESSLANE ESCLAVE

REV.	DATE	NAME	CHANGES	REVISION
0	15-03-22	vroze		0
User data 1			User data 2	SCHEME
				01

# ACCESSLANE - PORTILLONS PIVOTANTS VITRÉS

FRANÇAIS

ENGLISH



SOLIDWORKS Electrical



1PPV01.003\_0B

CONTRACT:

LOCATION:

+1

OPTION RECEPTEUR RADIO ACCESSLANE

REV.	DATE	NAME	CHANGES	REVISION
0	17-03-22	vroze		0
				SCHEME
				01

User data 1

User data 2



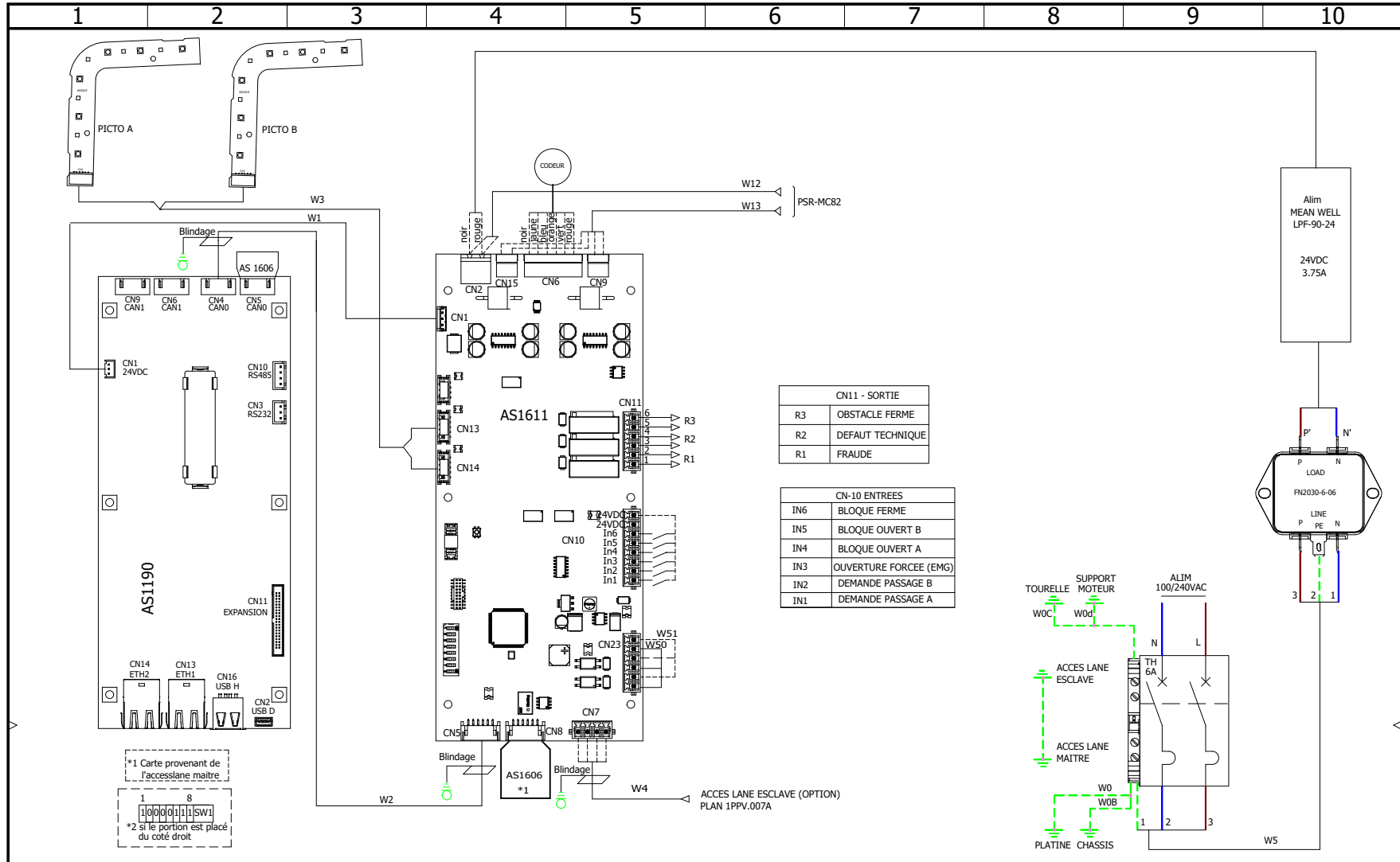




# ACCESSLANE - PORTILLONS PIVOTANTS VITRÉS

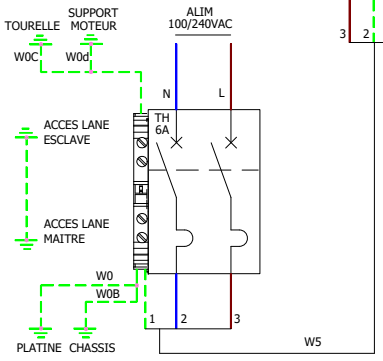
FRANÇAIS

ENGLISH



CN11 - SORTIE	
R3	OBSTACLE FERME
R2	DEFAULT TECHNIQUE
R1	FRAUDE

CN10 ENTREES	
IN6	BLOQUE FERME
IN5	BLOQUE OUVERT B
IN4	BLOQUE OUVERT A
IN3	OUVERTURE FORCEE (EMG)
IN2	DEMANDE PASSAGE B
IN1	DEMANDE PASSAGE A



\*1 Carte provenant de l'accesslane maitre  
 \*2 si le portion est placé du côté droit

SOLIDWORKS Electrical



1PPV01.006B\_0B

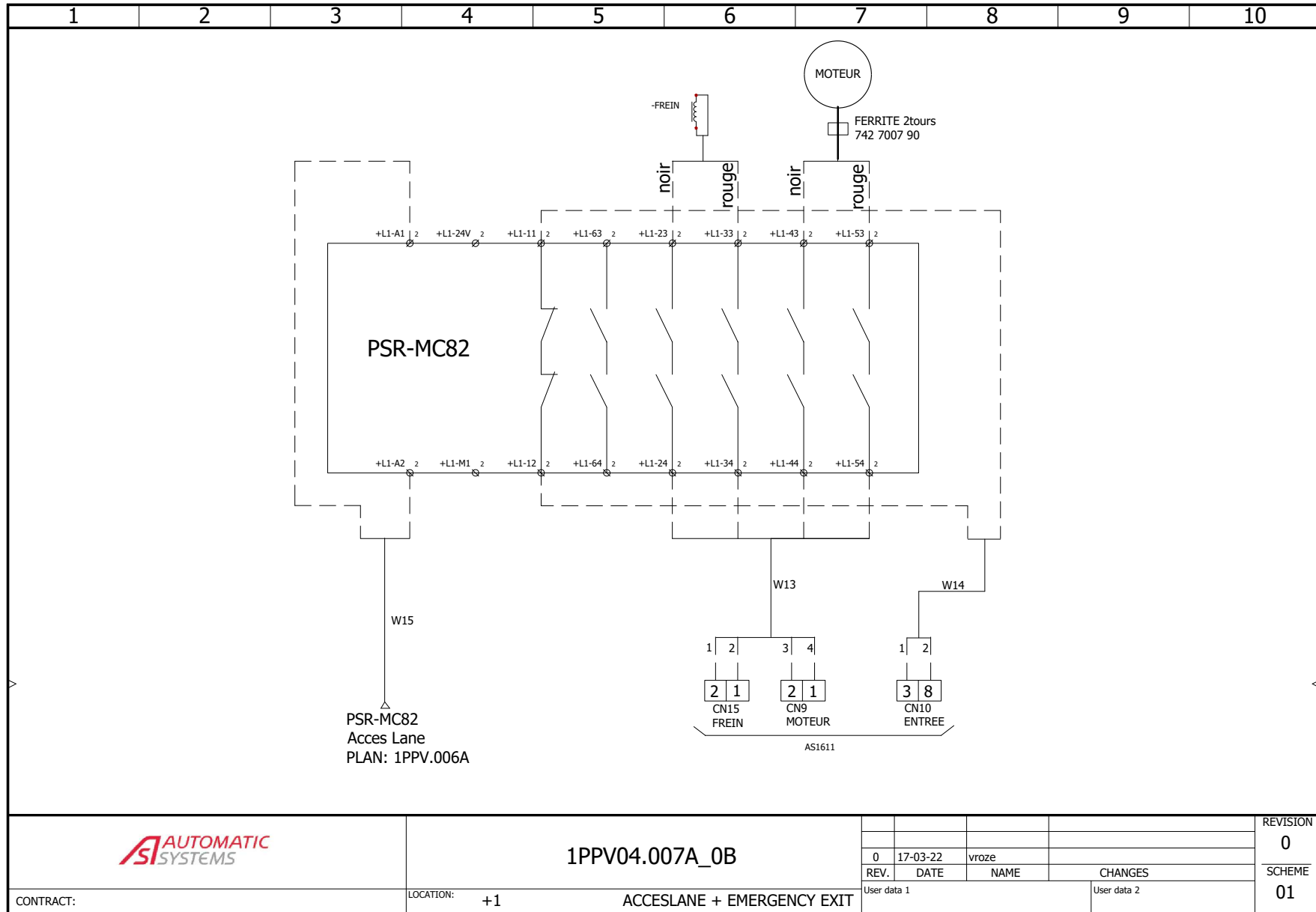
CONTRACT:		LOCATION: +1		ACCESLANE+EMERGENCY EXIT		REVISION	
						0	
REV.	DATE	NAME	CHANGES				SCHEME
0	21-02-22	vroze					01
User data 1						User data 2	

Document realized with version : 2021.0.3.5

# ACCESSLANE - PORTILLONS PIVOTANTS VITRÉS

FRANÇAIS

ENGLISH



SOLIDWORKS Electrical



1PPV04.007A\_0B

CONTRACT:

LOCATION: +1

ACCESSLANE + EMERGENCY EXIT

User data 1

User data 2

REVISION

0

REV.	DATE	NAME	CHANGES
0	17-03-22	vroze	

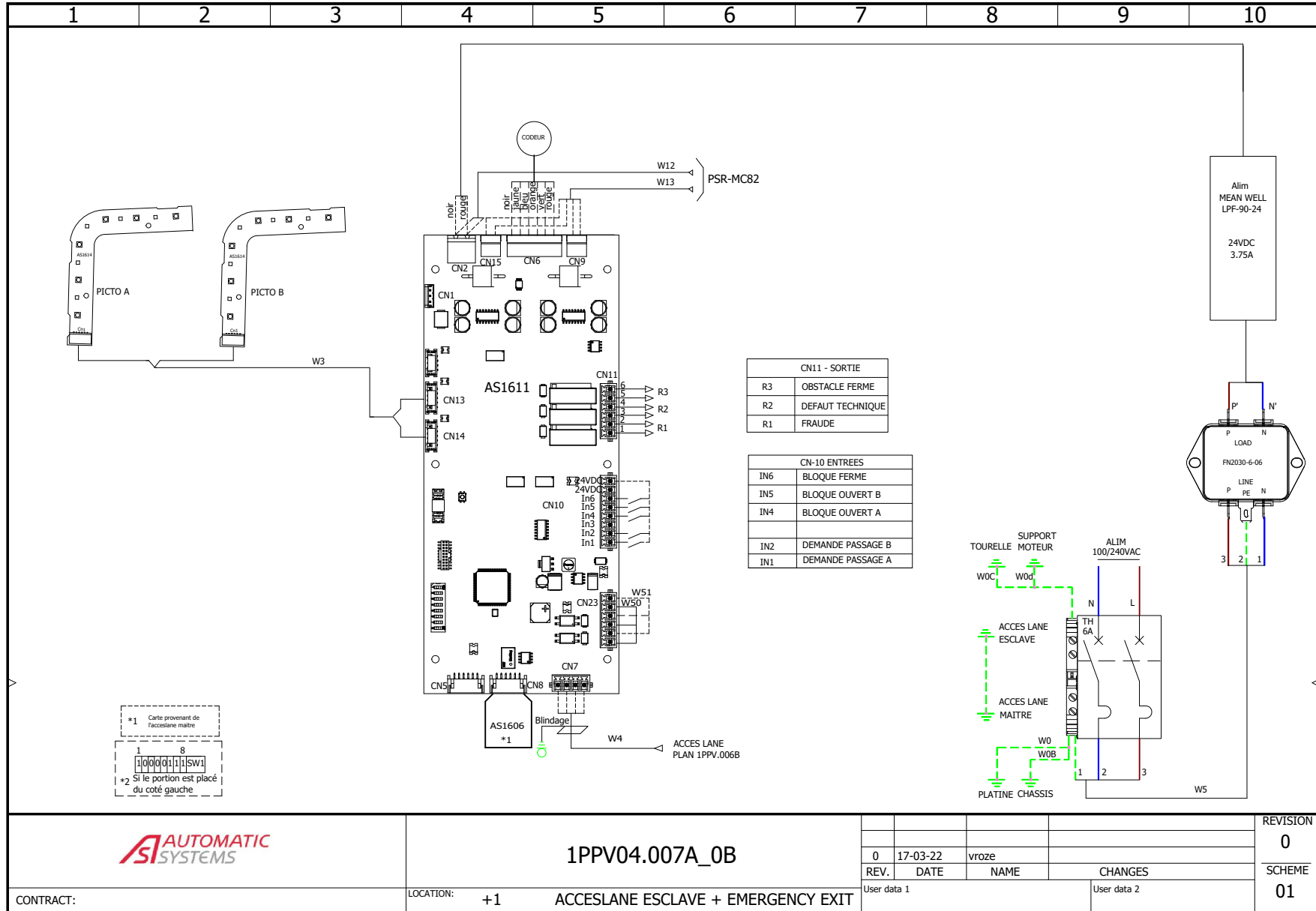
SCHEME

01

# ACCESSLANE - PORTILLONS PIVOTANTS VITRÉS

FRANÇAIS

ENGLISH



SOLIDWORKS Electrical



1PPV04.007A\_0B

CONTRACT:

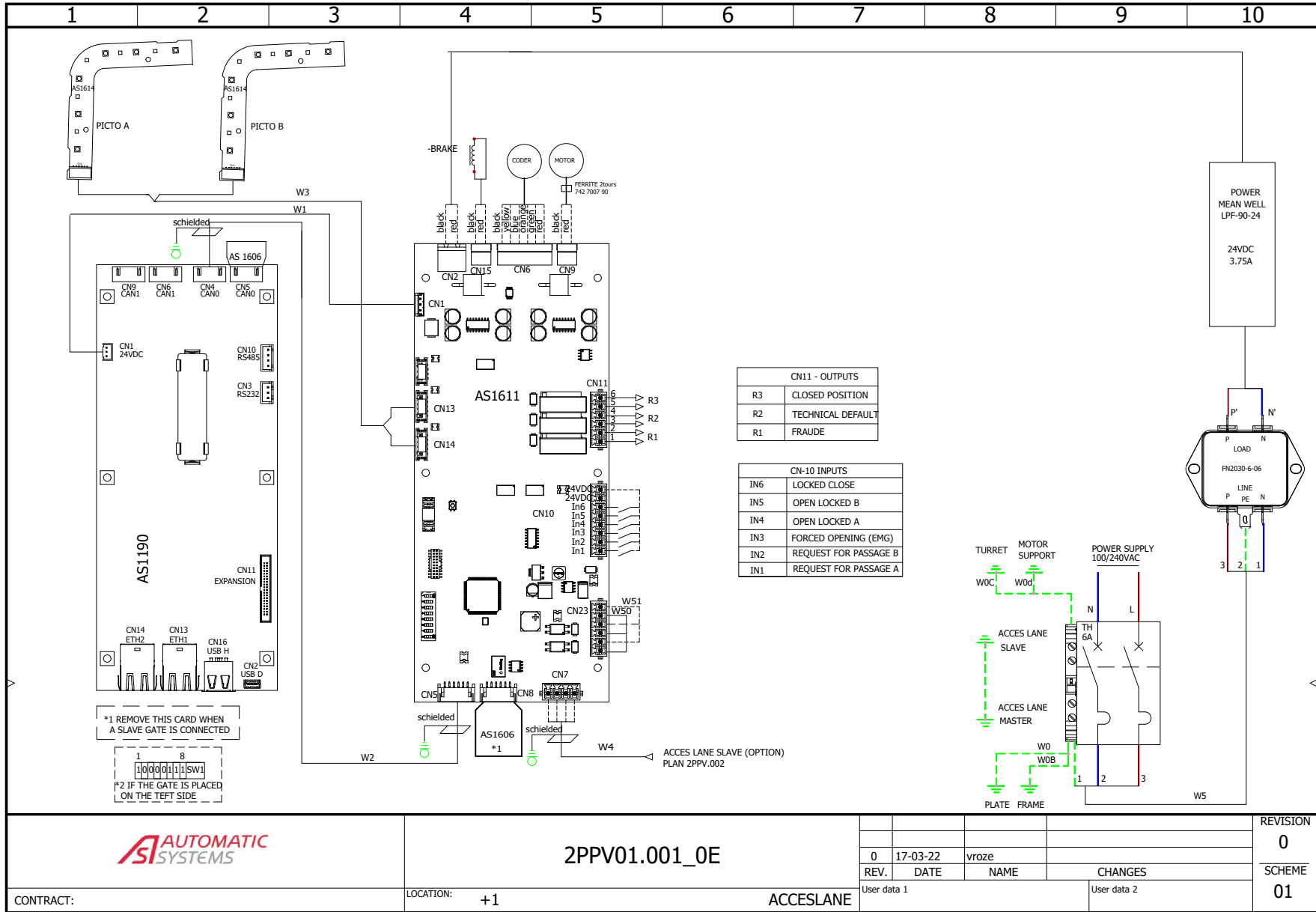
LOCATION: +1 ACCESLANE ESCLAVE + EMERGENCY EXIT

REV.	DATE	NAME	CHANGES	REVISION
0	17-03-22	vroze		0
User data 1			User data 2	SCHEME
				01

# ACCESSLANE - GLASS SWING GATES

FRANÇAIS

ENGLISH



SOLIDWORKS Electrical



2PPV01.001\_OE

CONTRACT:

LOCATION: +1

ACCESSLANE

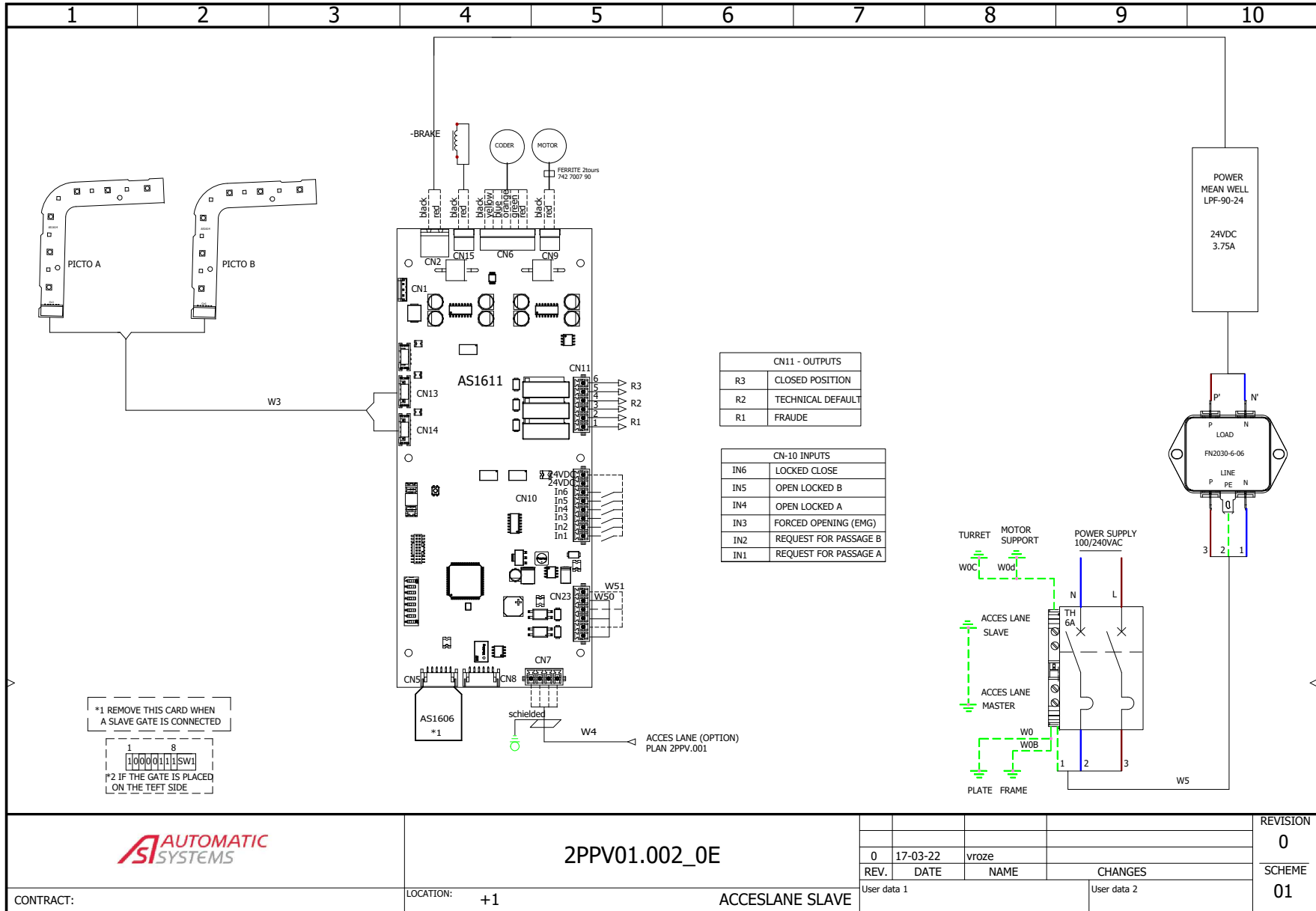
REV.	DATE	NAME	CHANGES
0	17-03-22	vroze	
User data 1			User data 2

REVISION  
0  
SCHEME  
01

# ACCESSLANE - GLASS SWING GATES

FRANÇAIS

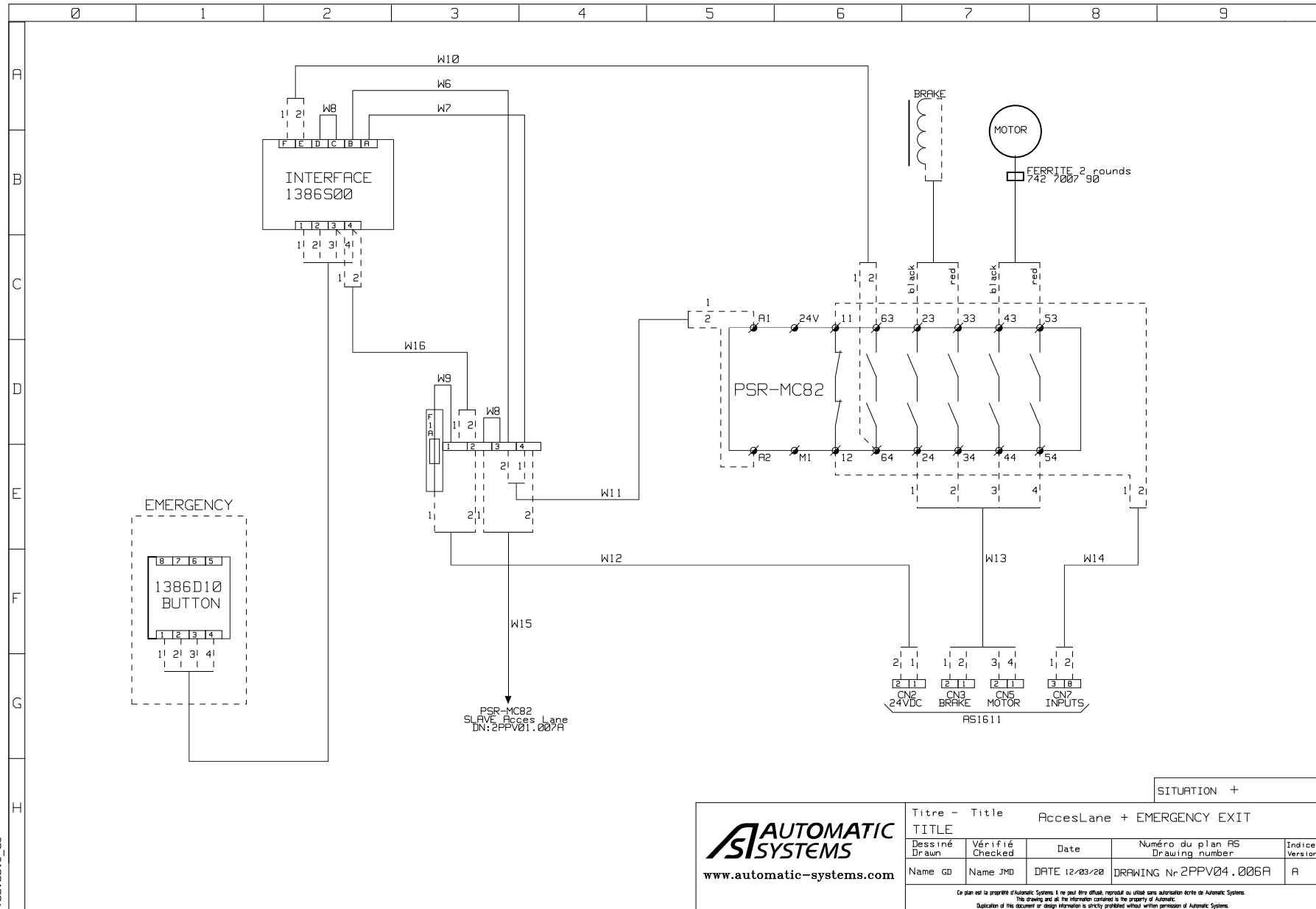
ENGLISH



# ACCESSLANE - GLASS SWING GATES

FRANÇAIS

ENGLISH



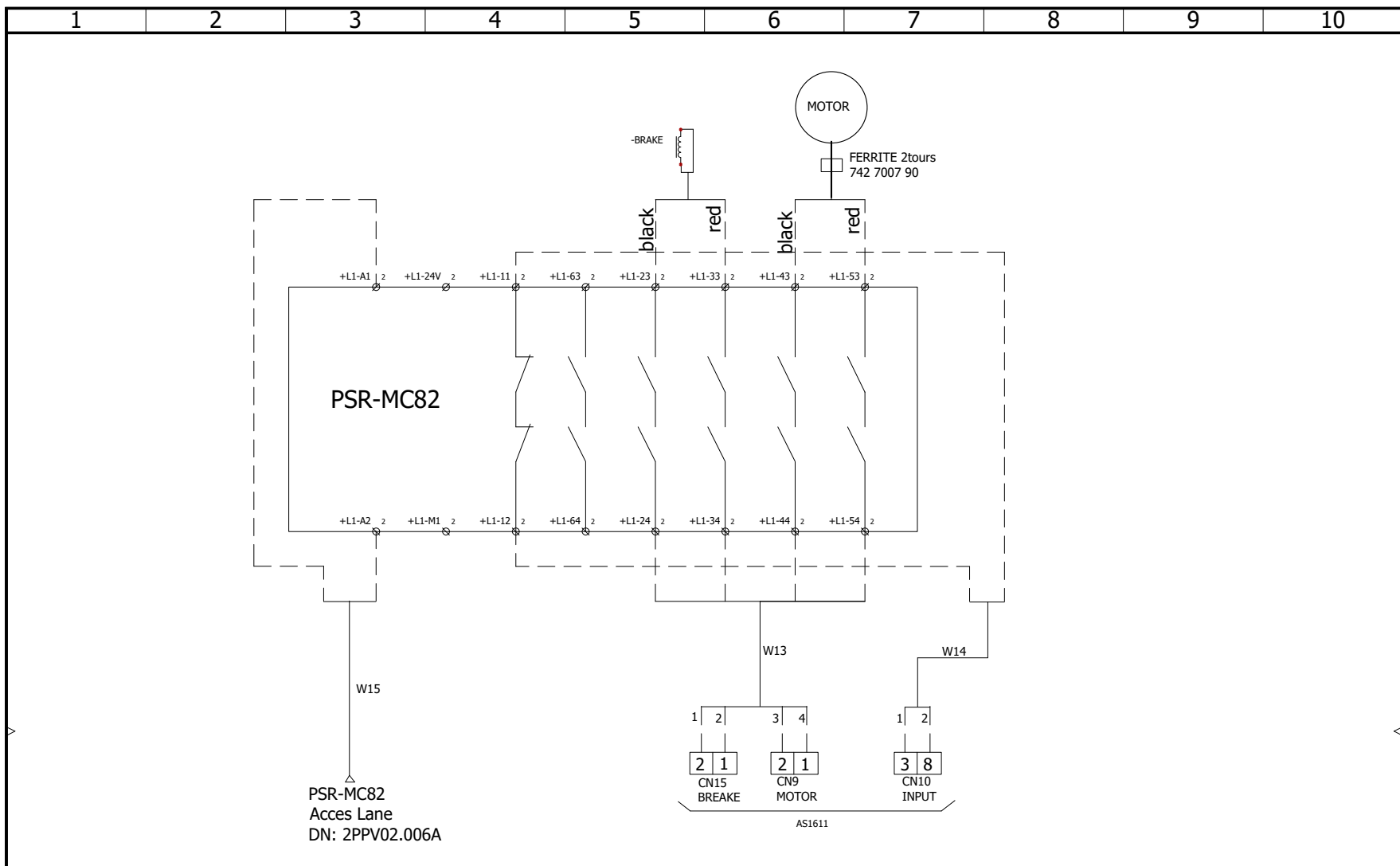
v00.001.c 06



# ACCESSLANE - GLASS SWING GATES

FRANÇAIS

ENGLISH



SOLIDWORKS Electrical



2PPV04.007A\_0B

CONTRACT:

LOCATION: +1 ACCESLANE SLAVE + EMERGENCY EXIT

REV.	DATE	NAME	CHANGES
0	17-03-22	vroze	
User data 1			User data 2

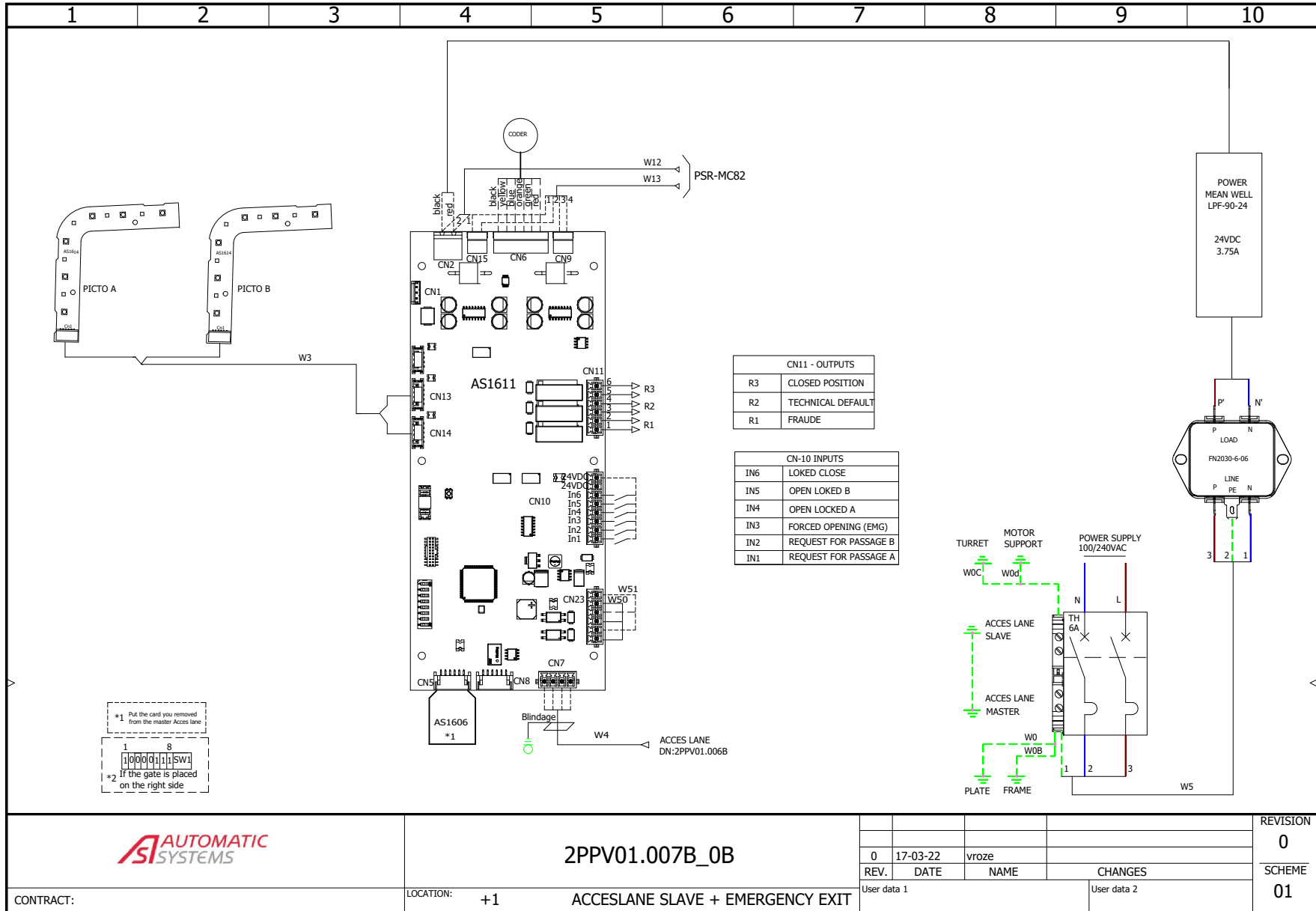
REVISION	0
SCHEME	01

Document realized with version : 2021.0.3.5

# ACCESSLANE - GLASS SWING GATES

FRANÇAIS

ENGLISH



SOLIDWORKS Electrical



2PPV01.007B\_0B

CONTRACT:

LOCATION: +1 ACCESLANE SLAVE + EMERGENCY EXIT

REV.	DATE	NAME	CHANGES	REVISION
0	17-03-22	vroze		0
User data 1			User data 2	SCHEME
				01

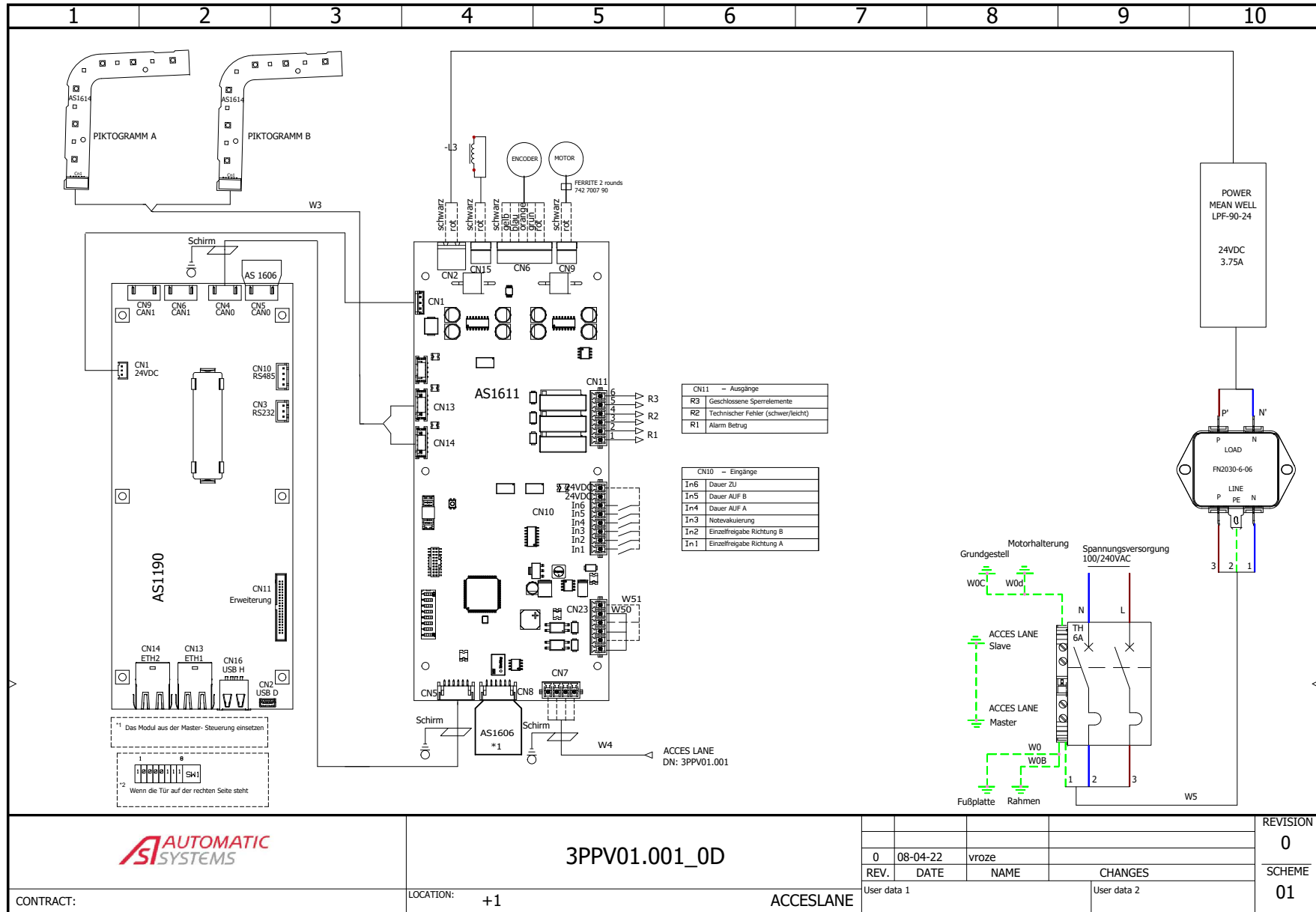
Document realized with version : 2021.0.3.5

# ACCESSLANE - SCHWENKTÜREN

FRANÇAIS

ENGLISH

DEUTSCH



SOLIDWORKS Electrical



3PPV01.001\_OD

CONTRACT:

LOCATION: +1

ACCESSLANE

User data 1

User data 2

REVISION

0

SCHEME

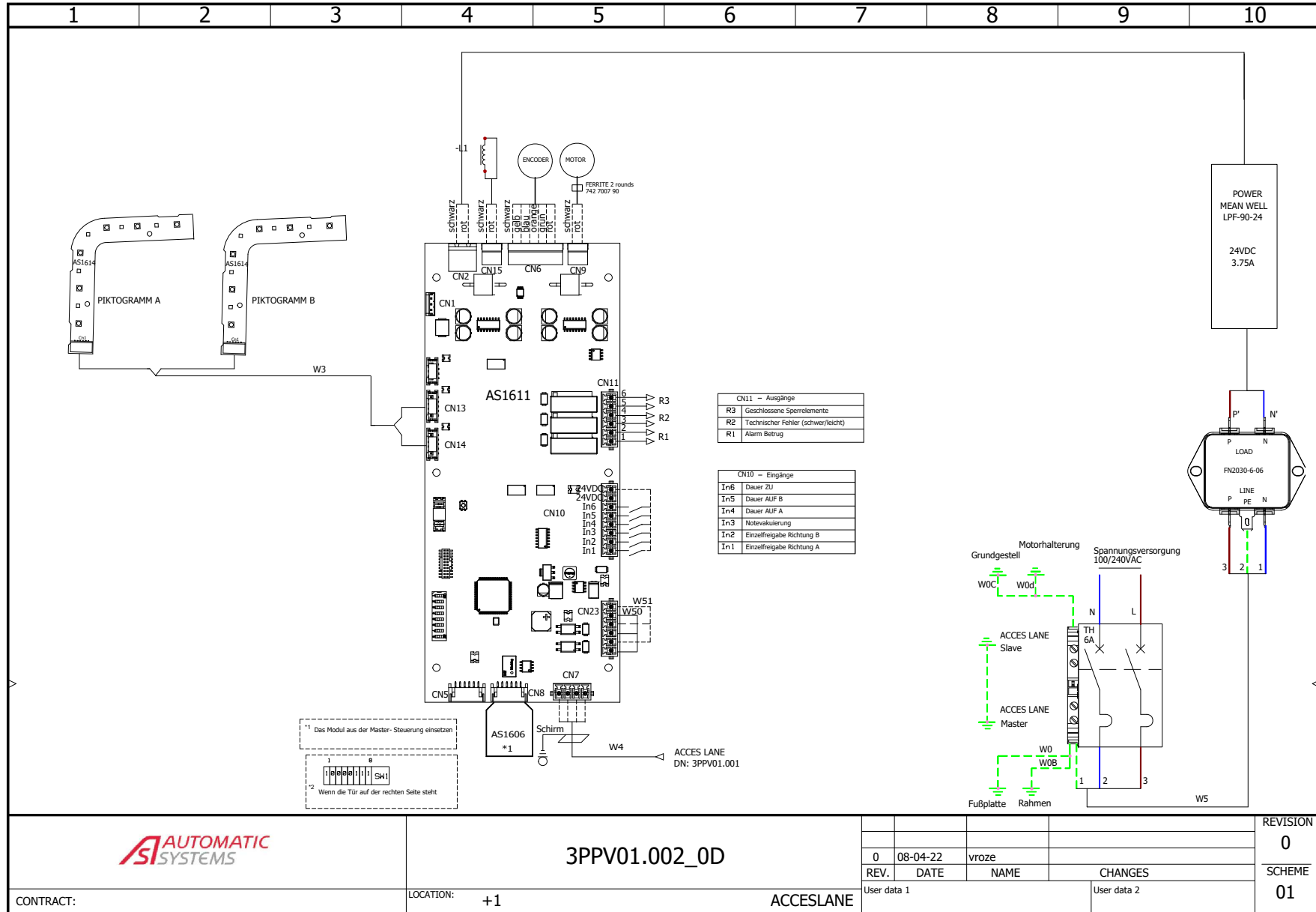
01

# ACCESSLANE - SCHWENKTÜREN

FRANÇAIS

ENGLISH

DEUTSCH



SOLIDWORKS Electrical



3PPV01.002\_0D

CONTRACT:

LOCATION: +1

ACCESSLANE

User data 1

User data 2

REVISION	0
SCHEME	01





## BELGIAN & INTERNATIONAL OFFICES

### Belgium

Tel.: +32.(0)10.23.02.11  
helpdesk.as@automatic-systems.com

### France

Tel.: +33 1 30 28 95 53  
helpdesk.fr@automatic-systems.com

### Germany

Tel.: +49 2303 553 4040  
helpdesk.de@automatic-systems.com

### United Kingdom

Tel.: +44 (0) 1604 654 210  
helpdesk.uk@automatic-systems.com

### Spain

Tel.: +34 93 478 77 55  
helpdesk.es@automatic-systems.com

### United States & Canada

Tel.: +1 450 659 0737  
helpdesk.nam@automatic-systems.com

### Others countries

Tel.: +32.(0)10.23.02.11  
helpdesk.as@automatic-systems.com

AccessLane-DTE-03



## Headquarters

Avenue Mercator, 5  
1300 Wavre - Belgium

[www.automatic-systems.com](http://www.automatic-systems.com) 