

# CL 635 / 635T

## Datasheet

Rev. 07 • Update 07/2021

**AUTOMATIC**  
SYSTEMS

**ClearLock™**

### DESCRIPTION

1. Painted steel **upper casing** containing the drive mechanism and the control board unit of the security booth.
2. **Two mobile obstacles** in laminated glass BR2S P6B. Each door panel is equipped with a protection ensuring the safety of users.
3. **Two lateral panels** made of painted steel and laminated clear glass BR2S P6B.
4. **Resin floor** of 25 mm thick for installation on a finished floor.
5. Control board unit & motorisation comprising:
  - Programmable electronic board;
  - I/O interface board for access control system;
  - Remote console for operating mode adjustment;
  - Voice messages device;
  - Two back-up batteries ensuring 100 cycles in case of power failure;
  - Electro-mechanical lock of the obstacles (with programmable unlocking in case of power failure);
  - Safety cells for reopening in case a presence is detected in front of the obstacles (anti-pinch safety).
6. **Spotlights** for the passageway lighting.
7. **Function pictograms**: red and green LED displays indicating the status of the security booth. And also push button, intercom and/or access badge reader, according to the need.
8. **Presence sensors and single person detection device (weighing system)**.
9. **Emergency opening button and call bell**.
10. **Lock** for external door locking.



The **ClearLock 63x** series, automatic round security booths are designed to provide high security access control.

The **ClearLock 635 and 635T** security booths, the smallest products of the ClearLock 63x series, are equipped with **two mobile obstacles** which provide a free passage of **580 mm** and an external diameter of **1.052 mm**.

The **ClearLock 635 and 639T** are motorised and bi-directional. It is answering to the market demand in term of unicity of detection, bullet resistance and burglary or vandalism resistance.

The **Clearlock 635 and 635T** are available with straight (180°) or left/right angled (90°) passage.

The **Clearlock 635T** has an internal height of **2300 mm** allowing the integration of the unicity of detection with volumetric camera and then without a need of basement.

Consisting of a frame, a painted steel housing and glass panels, the high-security **ClearLock** series booths provide thermal insulation and stand out in their surroundings.



## CONFIGURATIONS

1. RAL7035 Light Grey (by default) - RAL9011 Black - RAL9010 White - RAL8019 dark brown.
2. Profile position for wall connection:
  - entry / outside side.
  - middle position (by default).
  - exit / inside.
3. In the event of a power failure:
  - all doors open manually (by default).
  - the exit door (inside) remains blocked the front door (outside) opens manually
  - all doors remain locked
4. Integration of card reader, intercom and/or push button at the entry and/or exit of the booth.
5. Choice of the language of voice message and control consol.

## STANDARD TECHNICALS CHARACTERISTICS

Power supply	230 V single phase, 50/60 Hz, 10 A + ground
Power consumption	200 W
Temperature	Operating -10° to +55°C
Battery backup	2 batteries 2 Ah to allow operation in case of power failure.
Motors	2 motors 24Vdc for reversible movement of the doors, with closing safety lock. Opening of both the doors in case of emergency.
Passages (such data do not consider the possible working times due to utilization of card/badge readers)	<ul style="list-style-type: none"> <li>- 6 passages per minute in one direction</li> <li>- 8/9 passages per minute in both directions</li> </ul>
<b>CL 635</b>	
Dimensions Version with weight control	Overall dimensions (mm): Height: 2350 Diameter: 1052 Passage dimensions (mm): Height: 2074 Width: 580
Weight	600 kg depending on glass
<b>CL 635T</b>	
Dimensions Version with volumetric sensor	Overall dimensions (mm): Height: 2575 Diameter: 1052 Passage dimensions (mm): Height: 2300 Width: 580
Weight	700 kg depending on glass
Max relative humidity	90%, without condensation
MCBF	1 Mo of cycles or 2 year when respecting recommended maintenance
MTTR	1 hour
<b>CE</b>	Conforms to European norms.

## SURFACE TREATMENT

All the mechanical parts are treated against corrosion by electro zinc, according to RoHS norms.

## WORKS TO BE CARRIED OUT (NOT SUPPLIED)

- Fixing on the floor.
- Power supply.
- Connection between booth and access control devise.

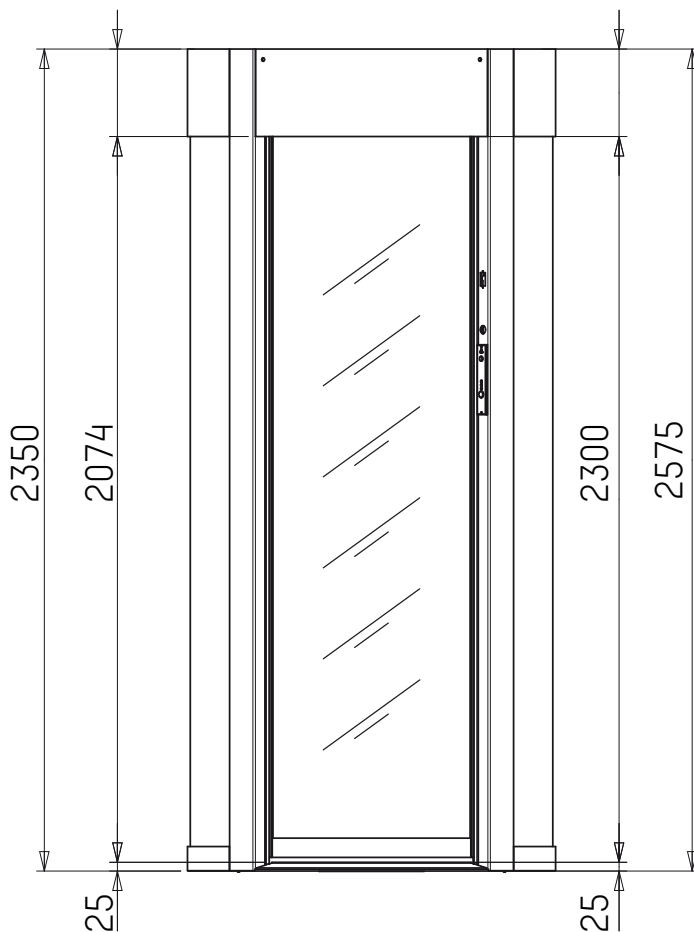
**Note:** Refer to installation drawing.

## OPTIONS

1. Left / Right angle 90° passage.
2. All lateral and mobile glasses in laminated glass BR3S P6B or BR4S P8B (EN1063+EN356).
3. BR4NS P8B glasses alternatives.
4. Product structure in FB4 certificated metal (EN1522).
5. Force entry resistance RC4 (EN1627) (all mobile & lateral BR3S P6B or BR4S P8B glasses included).
6. Rain protection / product with weight detection (+50 mm height of the product).
7. Rain protection / product with volumetric detection (+50 mm height of the product) - *only for CL 635T*.
8. Metal detector device & left object detection device (entry way only).
9. Opening internal roof for assistance service.
10. Heating of the canopy for outside front installation.
11. Dismountable booth (instead of welded). Delivered assembled or shipment in parts.
12. Frosted glass.
13. Microswitch contact under the cover for anti infraction alarm.
14. Housing other RAL paint or smooth finish paint.
15. Housing 304L stainless steel (brushed).
16. Floor frame for built-in installation.
17. Special support for installation on technical floor.
18. Support for reader (card, biometric...), placed inside the booth.
19. Mechanical locker for metal objects with 10 drawers.
20. Radar for automatic door opening (entry or/and exit way).
21. Colour video camera inside of the booth.
22. Auxiliary control console (in connection with the standard control console).
23. Remote special console with extra buttons.
24. 12V 7 Ah batteries (2).
25. Electronic card for the transmission in serial line of the weight detected inside the booth.
26. Support for readers (width > 4 cms) (entry/exit).
27. Converter RS485 to LAN for network consoles.
28. Service kit (cable, software, key...).
29. Touchscreen remote console.
30. SUPERCONSOLE Kit for PC.

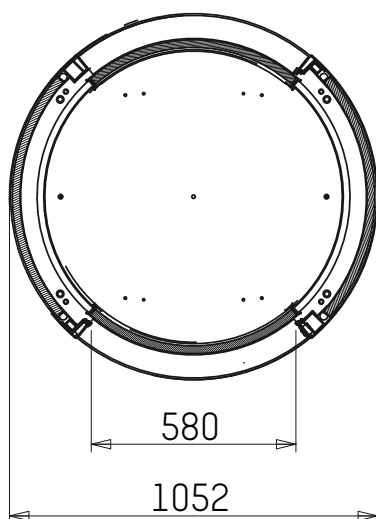
**Note:** For restrictions on options, refer to the price list.

**STANDARD DIMENSIONS (MM)**



**CL 635**  
with weight detection

**CL 635T**  
with volumetric detection



**Headquarters**  
Avenue Mercator, 5  
1300 Wavre - Belgium

✉ [helpdesk.as@automatic-systems.com](mailto:helpdesk.as@automatic-systems.com)

☎ +32.(0)10.23.02.11

🌐 [www.automatic-systems.com](http://www.automatic-systems.com)



CL 635-FT-EN-07