

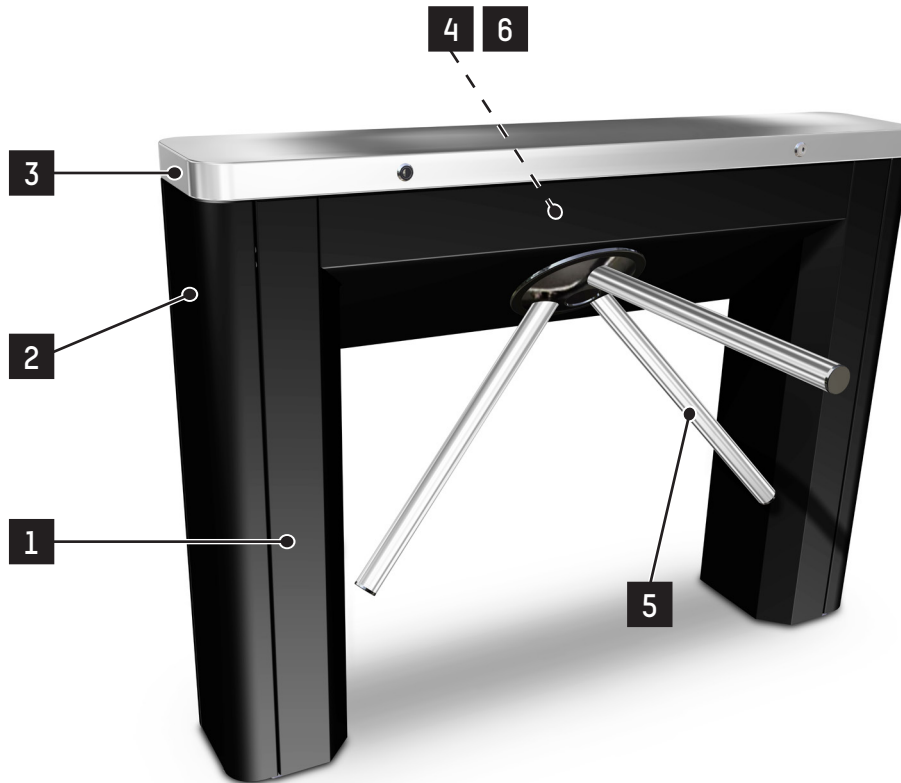
TL 2

Datasheet

Rev. 14 • Update 07/2022

AUTOMATIC
SYSTEMS

TriLane™



TriLane tripod turnstiles are designed for dissuasive and economical access control and allow the fixing of control equipment such as: proximity scanners, bar code scanners, badge collectors, facial recognition cameras, etc.

Their mechanisms, of robust and reliable design, exist in various configurations covering all most likely encountered cases in terms of pedestrian access control.

The TriLane mechanism offers, as an option, an anti-panic device that makes the tripod arm drop automatically in the event of a power failure. The unobstructed access then allows uninterrupted passage for users. The arm must be reset manually or by means of the optional motorisation when the power supply is restored.

TriLane turnstiles can be installed indoors or outdoors, alone or in battery. It can be combined with an AccessLane gate to generate a passageway for people with reduced mobility.

DESCRIPTION

1. Self-supporting painted steel body (RAL9005).
2. Aluminium front and rear end boxes. Space (customizable according to options) is provided in each direction of passage, for the installation of access control devices.
3. Removable top cover, in stainless steel locked with a key, to access the tripod mechanism.
4. Tripod mechanism: the locking of the tripod rotation is ensured by electromagnets and locking cams. Depending on the mode selected, an anti-return device prevents reverse rotation. (Unidirectional control as standard and bidirectional control as option)
5. Arm in stainless steel AISI 304.
6. Electronic control logic.



STANDARD TECHNICAL CHARACTERISTICS

Power supply ⁽¹⁾	100 - 230V single phase, 50/60 Hz	
Control circuit	24V DC	
Consumption	Standby:	< 15 W
	Operating:	< 55 W
	Maximum:	< 85 W
Ambient operating temperature	From -10° to + 50° C	
Relative ambient humidity	< 95%, without condensation	
Weight	60 kg	
Flow ⁽²⁾	20 passages/minute	
MCBF (Mean cycles between failures)	5.000.000 cycles, in compliance with recommended maintenance ⁽³⁾	
IP rating	IP44	
CE	Complies with European standards	

(1) Not to be connected to a floating network or to a high-impedance earthed industrial distribution network.

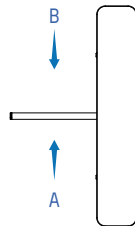
(2) Depending on the access control system reactivity and the speed of the users.

(3) Maintenance operations are detailed in the product's Technical Manual.

CONVENTIONS

Direction A = housing at right hand side of the walkway

Direction B = housing at left hand side of the walkway



WORKING MODES

The TriLane turnstile can operate in **5 different modes** for each passage direction:

1. Access permanently free.
2. Access permanently mechanically locked.
3. Access mechanically locked with automatic unlocking device to allow free passage in case of power failure. (Free-rotation)
4. Electrically controlled access.
5. Access electrically controlled with automatic unlocking device to give free passage in case of power failure. (Free-rotation)



The standard configuration of the TriLane is A5 - B1.

ANTI CORROSION TREATMENT

All internal parts are treated by zinc coating and passivation.

OPTIONS

- Stainless steel AISI 304L feet
- Full stainless steel AISI 304L body
- Full stainless steel AISI 316L body
- Dropping arms
- Bras longs (550 mm)
- Motorization:
 - fixed arms with movement assistance
 - dropping arms with rearming of the dropped arm
- Bidirectional passage
- Status light - direction A
- Status light - direction B
- Status light + reader integration kit - direction A
- Status light + reader integration kit - direction B
- Angled top cover in AISI 304L stainless steel for various integrations by the client
- Fraud detection "jump over" & "crawl under" with TOF sensor ⁽⁴⁾
- Network connectivity (IP)
- One door for stainless steel feet (direction A)
- One door for stainless steel feet (direction B)
- One door for stainless steel feet and one collection box (direction A)
- One door for stainless steel feet and one collection box (direction B)
- Finely structured matt powder coat in : RAL5008, RAL6014, RAL7003, RAL7016, RAL9010 ⁽⁵⁾
- Heating with thermostat (for operation until -20°C)
- Heating with thermostat (for operation until -40°C)
- Push button for free exit
- Smart & Slim control panel
- SmartTouch configurable interactive control panel

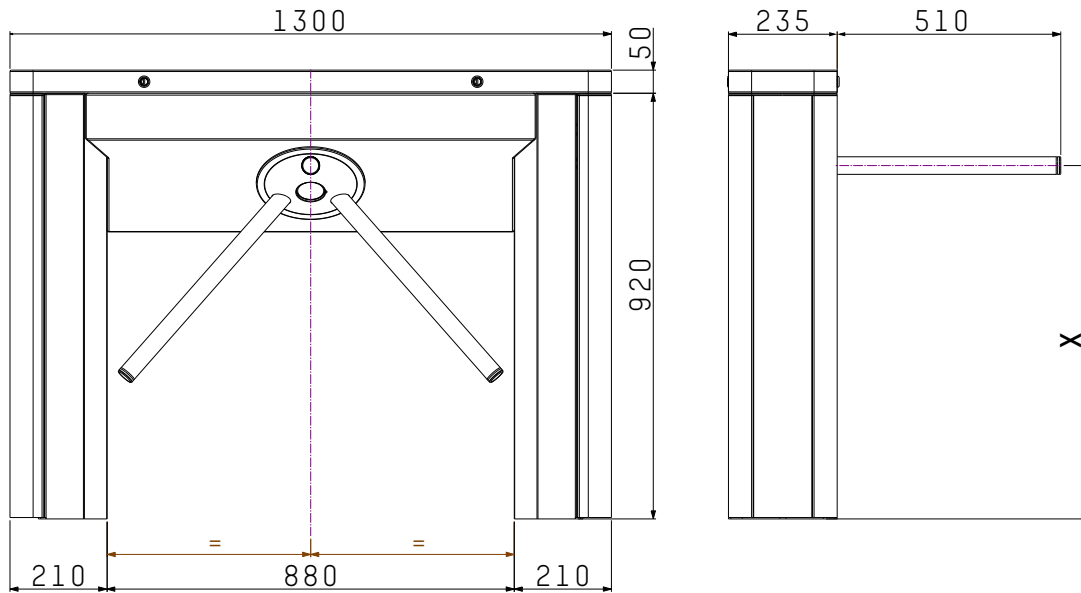
(4) No direct exposure to sun radiation. Intra-building use with 3M™ Sun Control Film Prestige 70 on building glazings.

(5) Only for the steel and aluminum parts - not for the top lid.

WORKS TO BE PROVIDED BY THE CUSTOMER

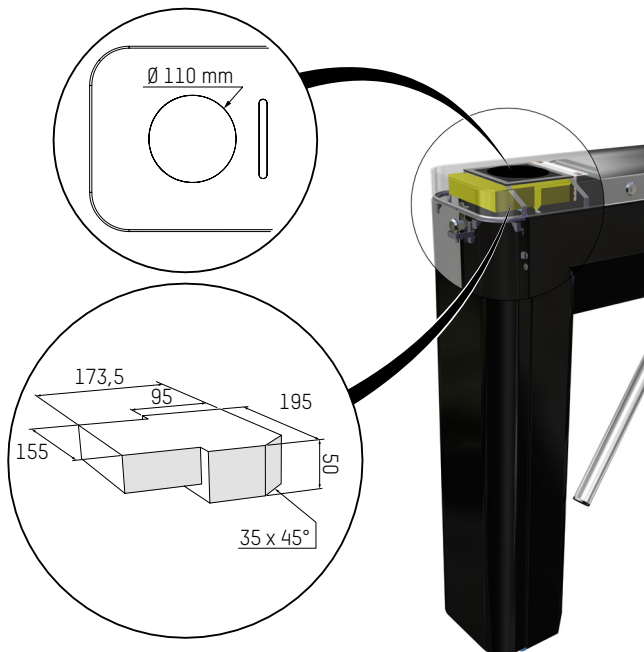
- Power supply.
- Connecting electrical wiring to the control units.
- Potential masonry and fixing work (see installation drawing).

STANDARD DIMENSIONS (MM)

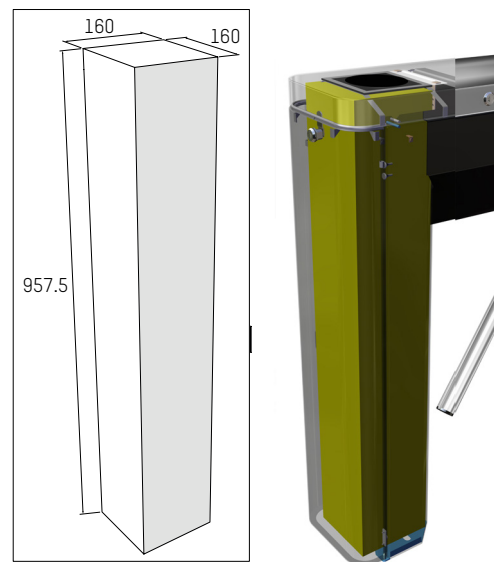


Arm height	X
Dropping arm	750
Standard arm	755

AVAILABLE VOLUMES FOR READER INTEGRATION



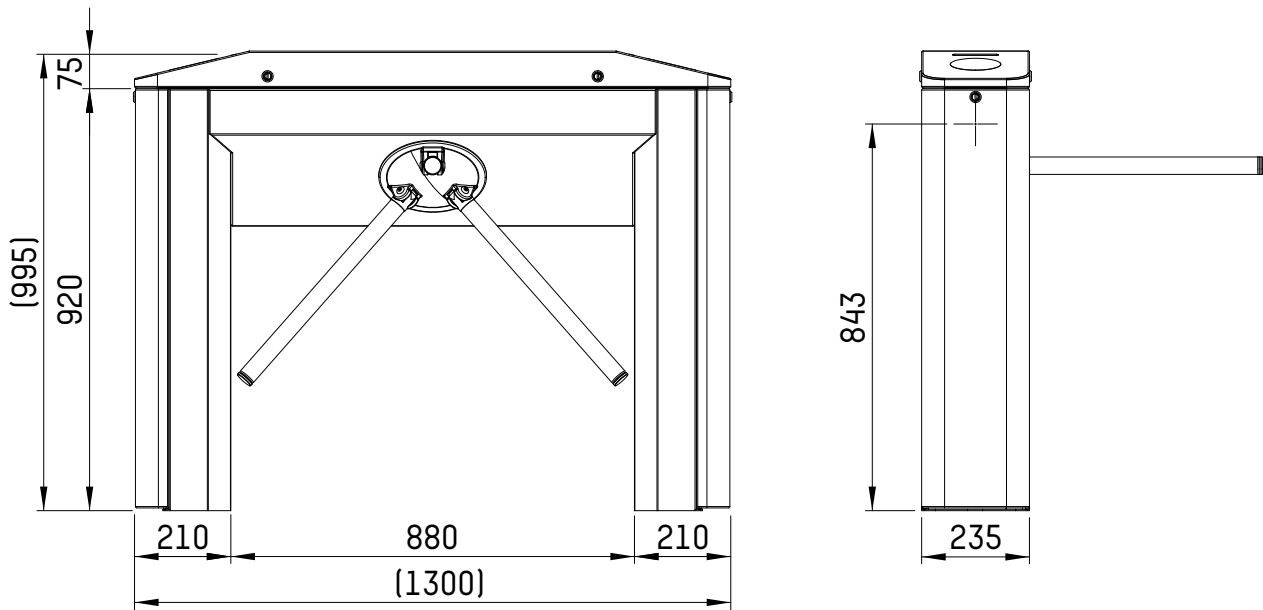
- Inside the top cover (with STANDARD optional kit)*



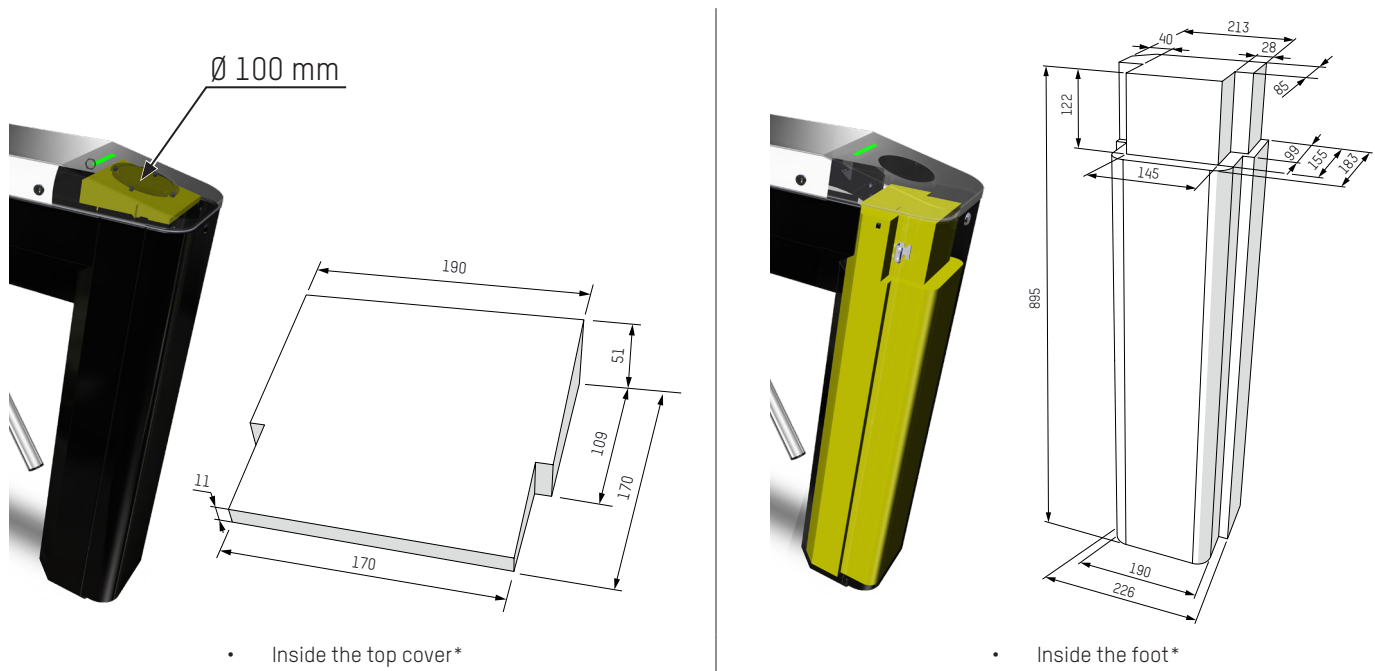
- Inside the foot*

* For all non-standard requests, please contact your sales manager for more information.

TRILANE DIMENSIONS WITH OPTIONAL ANGLED TOP COVER (mm)



VOLUMES AVAILABLE FOR DRIVE INTEGRATION (OPTIONAL ANGLED TOP COVER)



* For all non-standard requests, please contact your sales manager for more information.

Headquarters

Avenue Mercator, 5
1300 Wavre - Belgium



✉ helpdesk.as@automatic-systems.com



☎ +32.(0)10.23.02.11



🌐 www.automatic-systems.com



TL 2-FT-EN-14